



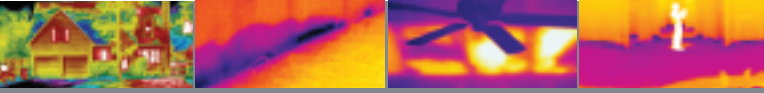
The Global Leader in Infrared Cameras



205 Westwood Ave
Long Branch, NJ 07740
1-877-742-TEST (8378)
Fax: (732) 222-7088
salesteam@Tequipment.NET

FLIR B200

INFRARED CAMERA



As a base model in the B-Series, the B200 delivers sharp, high-quality images and a high-resolution detector in a compact and ergonomic design.



- > High quality 200 x 150 IR resolution
- > Thermal sensitivity of 80 mK (NETD)
- > Integral 1280 x 1024 visible light camera
- > Video lamp for quality visible images
- > 3.5 inch touch-screen LCD
- > Picture in Picture to show fusion images
- > Interchangeable lens for greater versatility
- > Humidity/Dew Point and Insulation Alarms

Affordable B200

FLIR's new B200 infrared camera expands the choices available to thermographers and building professionals who need a powerful solution at an affordable price. Higher models in the B-Series family add touch-screen, text, and support of voice recording.

The B200 can help professionals identify energy waste and diagnose moisture and other conditions in buildings that can cause damage and loss of business.

Easy and Versatile Solution

FLIR's B200 infrared camera weighs less than two pounds, making it an easy camera to carry with you when conducting infrared surveys. The camera's light weight and comfortable form is attributed to a small advanced IR detector and innovative battery design.

Investment Protection

The B200 camera is upgradeable so your investment in technology, software, and training is protected. Simply add higher-model B-Series features as your needs change and grow.

Entry-level and experienced thermographers will benefit from the ease of use and productivity features of the B200 camera.

Inspect with Confidence

The B200 model includes FLIR's exclusive humidity/dew point and insulation alarms. The alarms make it easy to scan buildings and homes to find conditions that cause damage and energy waste.

Find Trouble Fast

The B200 camera's 80 mK thermal sensitivity helps you pinpoint trouble fast.

The camera includes 200 x 150 IR resolution which translates to 30,000 pixels. That's one-third more detail than competing brands with 160 x 120 resolution.

Advanced Optics

The B200 comes with a 25° lens for normal views. An optional 45° lens is available for wide-angle images. And a 15° telephoto lens is available for long-range work. The B-Series lenses are interchangeable and easily attach to the camera body. Tilting only the optic, allows intuitive and productive use of the camera for extended periods of time. This is a benefit to organizations that regularly conduct detailed surveys.

Produce Sharp Images

Auto and manual focus features of the B200 allow a wide range of users to take advantage of the camera. This ensures everyone can take sharp thermal images and produce accurate temperature analysis and results. The camera's 2x digital zoom capability helps you zoom in to get close detail in a range of applications.

1.3 Mega Pixel Visible Light Camera

The B200 includes an integral visible light camera to add visual information to reports. On-camera Picture in Picture (PIP) image fusion capability is provided as well so users can see a scalable infrared image super-imposed in a visible light image.

A standard video-out port enables users to display images on a virtual reality Heads Up Device (HUD). This extends the use of the camera in tight spots and special applications.

B-Series cameras also connect to a standard off-the-shelf video display device for viewing of IR images by a large audience.

Information-Packed Radiometric Images

USB port connection enables convenient image downloading from the B200 to your PC. All the valuable information you collect in the field, such as temperature data, object parameters, and text/image information is saved with the IR image files you download to your PC. This simplifies data collection and allows for quick, efficient, and accurate processing of information after your field work is done.

The B200 includes QuickReport analysis and reporting software. Optional Reporter software, a Microsoft® Word-based program - is available from FLIR for advanced analyses and report generation.

ThermaCAM is a registered trademark and FLIR Systems is trademark of FLIR Systems.

This product is protected by patents, design patents, patents pending, or design patents pending.

FLIR B200 Technical Specifications

Imaging Performance	
Field of View (FOV) / Close Focus Limit	25° x 19° / 0.4 m (1.31 ft.)
Thermal sensitivity (NETD)	0.08°C @ +30° (+86°F) / 80mK
Detector Type	Focal Plane Array (FPA) microbolometer
IR resolution	200 x 150
Spectral range	7.5 to 13 µm
Digital zoom and pan/focus	1x - 2x continuous/auto and manual focus
IFOV (with 25° lens)	2.18 mRad
Image Presentation	
Image modes	Thermal, Visual, Thermal Fusion
FLIR Fusion	Picture in Picture (PIP) - scalable IR image in visible light image
Display	Built-in touch-screen LCD display, 3.5 in.
Video lamp	1000 cd
Visible light camera resolution	1280 x 1024 (1.3 megapixels)
Measurement	
Object temperature range	-20°C to +120°C (-4°F to +248°F), optional up to +1200°C (2192°F)
Accuracy	±2°C (±3.6°F) or ±2% of reading
Measurement modes	5 Spotmeters, 5 Box areas, Isotherm, Auto hot/cold spot
Alarms	Humidity alarm (includes dew point alarm), Insulation alarm
Set-up controls	Mode selector, color palettes (BW, BW inv, Iron, Rain), configure info to be shown in image, local adaptation of units, language, date and time formats, and image gallery
Measurement corrections	Reflected ambient temperature and emissivity correction
Image Storage	
Digital storage/capacity	Removable SD Memory Card/1000 + JPEGs
Image storage mode & formats	IR/visible light, standard JPEG
Laser LocatIR™	
Classification/Type	Class 2/Semiconductor AlGaInP Diode Laser: 1mW/635 nm (red)
Power Source	
Battery type	Rechargeable Lithium-Ion battery
Battery operating time	4 hours +
Battery charging	2 bay charging system, 10-16 V input. Charging status indicated by LED's
AC operation	AC adapter, 90-260 VAC input. 12 V output to camera
Voltage	11-16 VDC
Power management	Automatic shut down and sleep mode after settable time
Environmental	
Operating temperature range	-15°C to +50°C (5°F to 122°F)
Storage temperature range	-40°C to +70°C (-40°F to +158°F)
Humidity	95% relative humidity +25°C to +40°C (+77°F to +104°F) non condensing
Water and dust resistant (encapsulation)	IP 54, IEC 360
Shock	25G, IEC 68-2-29
Vibration	2G, IEC 68-2-7
Physical Characteristics	
Weight	0.88 kg (1.94 lb.)
Size (L x W x H)	106 x 201 x 125 mm (4.2 x 7.9 x 4.9 in.), with lens pointing forward
Tripod mounting	1/4" - 20
Interfaces	
USB (cable included)	Image transfer to PC
Video output	NTSC Video
Software	
QuickReport™	Included
Reporter™ 8 (Microsoft® Word based)	Optional

Camera includes:

IR camera with F 1.3 25° lens, image frequency 9Hz

Integral visible light camera with lamp

Transport case

Camera Lens Cap

Battery

2-bay battery charger

Video Cable

USB cable Std A <-> Mini B, 2 m/6.6 ft.

SD Memory Card

Sun Shield

Stylus Pen

User documentation CD-ROM, 21 languages

Power supply

Getting Started guide

Interchangeable lenses/options/accessories

Optional Add-on optics, Telephoto lens, 15°

Optional Add-on optics, Wide angle lens, 45°

High temperature option (up to +1200°C (2192°F))

12 volt auto adapter

Hip/Belt mounted camera holster

Neckstrap

USB-A for memory stick



From Left to right: USB mini for PC image download, 4 pole audio for voice annotation, NTSC video, USB-A for memory stick image transfer



The Global Leader in Infrared Cameras



205 Westwood Ave
Long Branch, NJ 07740
1-877-742-TEST (8378)
Fax: (732) 222-7088
salesteam@Tequipment.NET